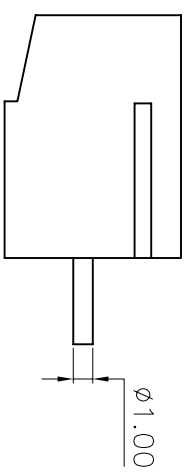
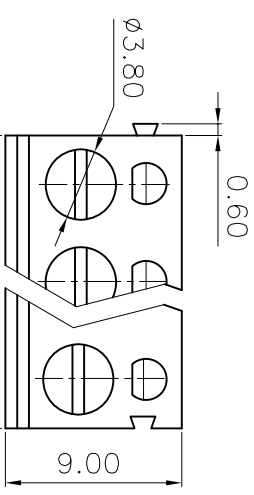
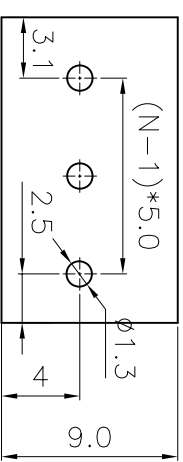
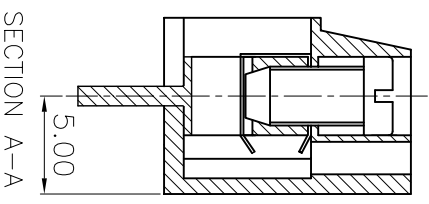
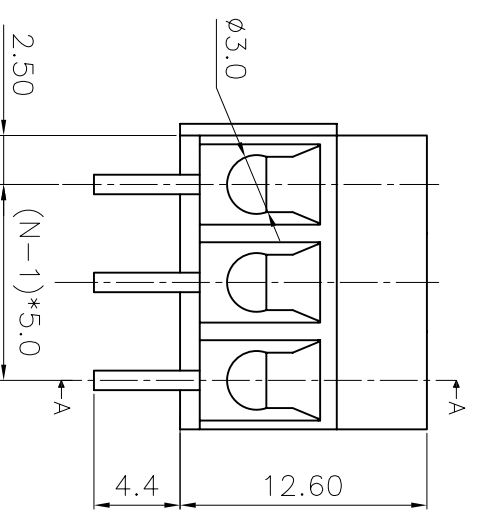


REV.	DESCRIPTION	DRAWN	CHECKED	APPROVED
A	NEW RELEASE	LJH 06/27/07'		



N=Number of contacts

STRAIGHT TYPE



P.C.B. LAYOUT

GENERAL TOLERANCE	ANGLE TOLERANCE	±5°
X. ±0.60	X. ±3°	
.X ±0.38	.X ±2°	
.XX ±0.25	.XX	
DRAWING TYPE	CUSTOMER	
SCALE	1:1	SHEET 1 OF 1
DRAWING NO.	KF300-XXXXX	

PROJECTION	TITLE	EURO TERMINAL BLOCKS
UNITS	mm	PITCH5.0MM
SHEET SIZE	A4	
SERIES	KF300 SERIES	

- MATERIAL
SCREWS: M3 STEEL ZINC PLATED
WIRE GUARD: PHOSPHOR BRONZE NI PLATED
OR STAINLESS STEEL
PIN HEADER: BRASS, TIN PLATED
HOUSING: PBT, UL94V-0
- ELECTRICAL
RATED VOLTAGE : 300V
RATED CURRENT : 10A
CONTACT RESISTANCE : 20mΩ
INSULATION RESISTANCE : 5000MΩ/1000V
WITHSTANDING VOLTAGE : AC1500V/1Min
WIRE RANGE : 22-14AWG 2.5mm²
- MECHANICAL
TEMP.RANGE : -30°C~+120°C
MAX SOLDERING : +250°C, FOR 5 SEC.
TORQUE : 0.5Nm(4.5lB.IN)
STRIP LENGTH : 4.5-5mm
PRODUCT NUMBER CODE:
KF300 - X X X X X X

- CONTACTS TYPE
- V:VERTICAL TYPE
- HOUSING COLOR
- B:BLACK G:GREEN
- L:BLUE R:RED
- CONTACT PLATING
- 0:GOLD FLASH
- 3:30u" 6:TIN
- CONNECTOR TYPE
- P:PLUG S:SOCKET
- N:OF CONTACTS
- 02 03 08 16

DFE 慈溪市凯峰电子有限公司

KAIFENG ELECTRONIC CO.,LTD

