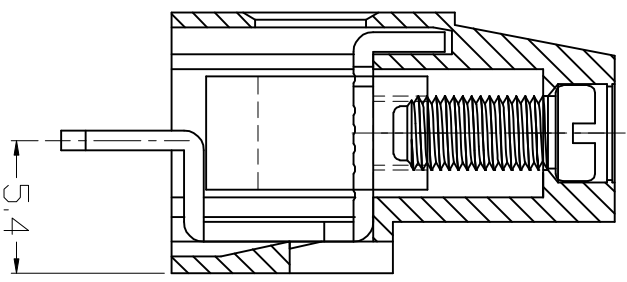
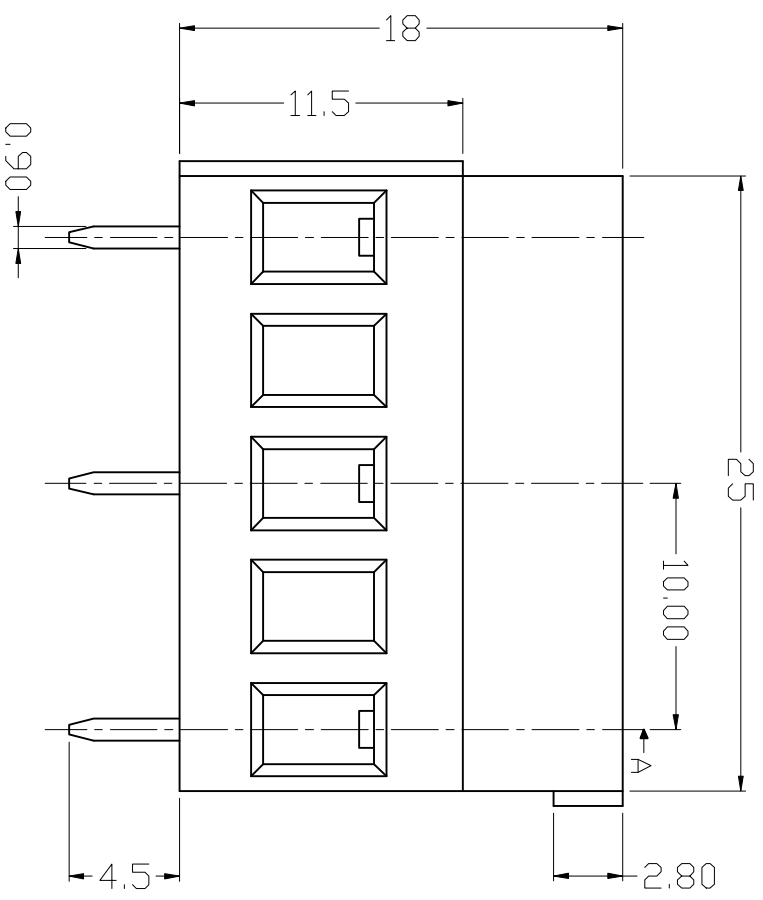
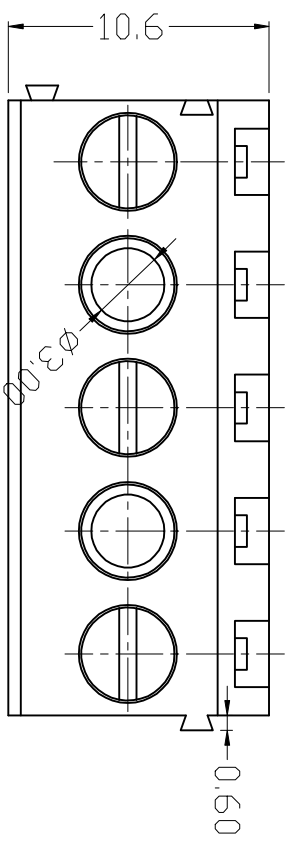


REV	DESCRIPTION	DRAWN	CHECKED	APPROVED
A				



-MATERIAL
 SCREWS : M3 STEEL ZINC PLATED
 CONTACT : BRASS
 PIN HEADER : BRASS, TIN PLATED
 HOUSING : PA66, UL94V-0

-ELECTRICAL
 RATED VOLTAGE : 300V
 RATED CURRENT : 25A
 CONTACT RESISTANCE : 20mΩ
 INSULATION RESISTANCE : 5000MΩ/1000V
 WITHSTANDING VOLTAGE : AC1500V/1Min
 WIRE RANGE : 24-12AWG 1.5mm²

-MECHANICAL
 TEMP RANGE : -40°C ~ +105°C
 MAX SOLDREING : +250°C, FOR 5 SEC.
 ORQUE : 0.4Nm(3.6lB.IN)
 STRUO LEBGTG : 6-7mm

GENERAL TOLERANCE		ANGLE TOLERANCE		PROJECTION	TITLE
X.	±0.20	X.	±2°	UNITS	⊕ - ▽
.X	±0.15	.X	±1°	SHEET SIZE	mm
.XX	±0.10	.XX	±0.5°	A4	SERIES
DRAWING TYPE COMPONENTS		SCALE		KF129 SERIES	
DRAWING NO.		1:1		KF129V-10.0	
		SHEET		KAIFENG ELECTRONIC CO.,LTD	
		1 OF 1		慈溪市凯峰电子有限公司	

