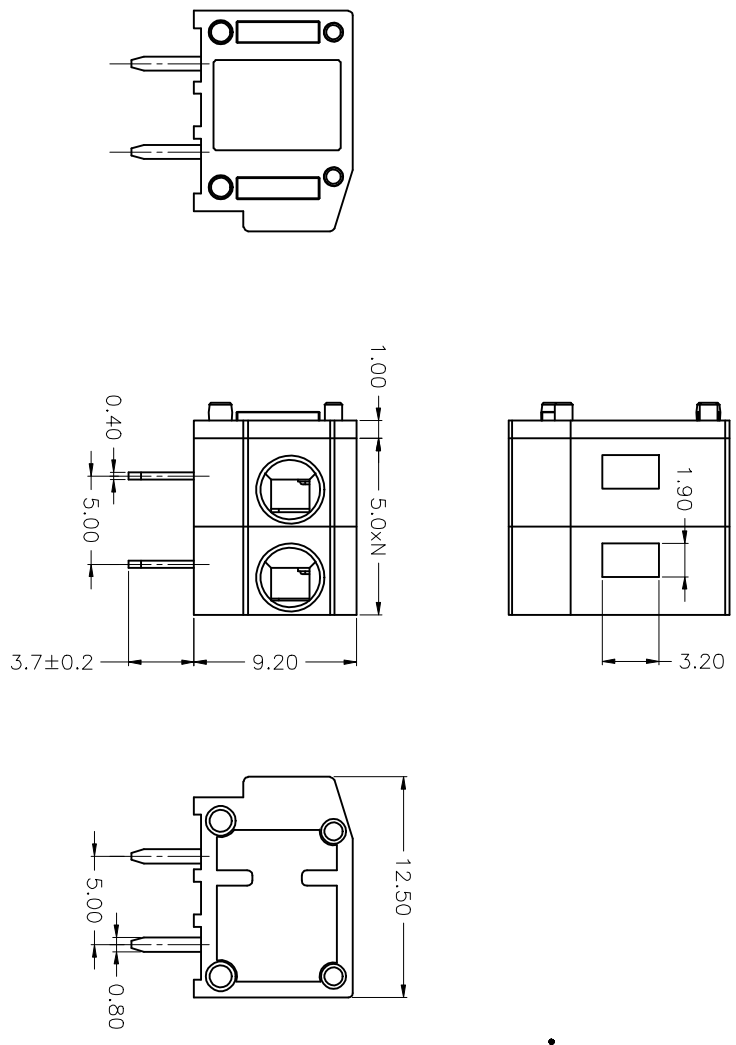


REV.	DESCRIPTION	DRAWN	CHECKED	APPROVED

• MATERIAL
 WIRE GUARD: STAINLESS STEEL(SUB301)
 PIN HEADER : BRASS, TIN PLATED
 HOUSING : PA66, UL94V-0

• ELECTRICAL
 RATED VOLTAGE : 250V
 RATED CURRENT : 10A
 CONTACT RESISTANCE : 20mΩ
 INSULATION RESISTANCE : 5000MΩ/1000V
 WITHSTANDING VOLTAGE : AC2000V/1Min
 WIRE RANGE: 20-14AWG 1.5mm²

• MECHANICAL
 TEMP. RANGE : -40°C~+105°C
 MAX SOLDERING : +250°C, FOR 5 SEC.
 STRIP LENGTH: 9-10mm



GENERAL TOLERANCE		ANGLE TOLERANCE		PROJECTION	
X, .X	±0.30	X, .X	±5°	UNITS	⊕ - ⊖
.XX	±0.20	.XX	±3°	mm	mm
	±0.10		±2°	SHEET SIZE	A4
				SERIES	KF124B SERIES
				PITCH	5.00MM
				PCB SPRING TERMINAL BLOCKS	
				DRAWING NO.	
				SCALE	
				1:1	
				SHEET	
				1 OF 1	

KF 慈溪市凯峰电子有限公司
 KAIFENG ELECTRONIC CO.,LTD